

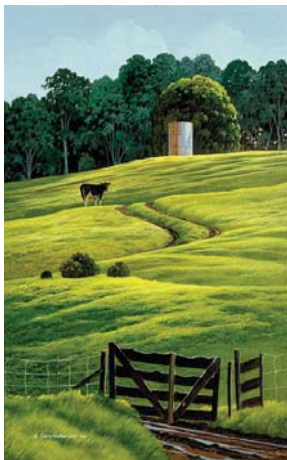
# A Map to the Paintings of Curtis Wilson Cost

The following is a scenic drive through beautiful Upcountry Maui to the actual sites that inspired many important oil paintings by Curtis Wilson Cost. Our drive ends with a visit to The Curtis Wilson Cost Gallery at the Kula Lodge on Hwy 377. Kula Gallery hours are from 8:30 a.m. to 5:00 p.m. 7 days a week.

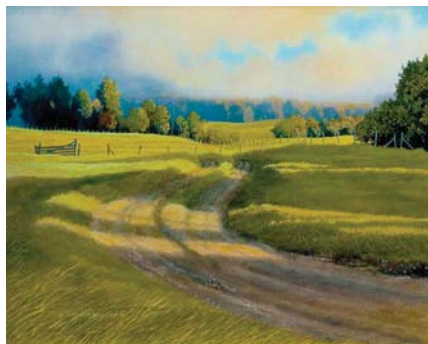
...All scenic drives need a starting point. We begin ours at the most central point on Maui, the entrance to the Kahului Airport at the corner of Dairy Road and Hana Hwy or Hwy 36.

1. Head southeast on Hana Hwy toward Hana for 2.0 mi.
2. Turn right at Haleakala Hwy heading east for 7.1 mi.
3. Turn left at Makawao Ave for 1.8 mi.
4. Turn right on Olinda Rd for 1.0 mi.
5. Turn right again on Hanamu Road, reset your odometer and travel .4 of a mi. Look to your left directly after the speed bumps. You have arrived at the site of two paintings with 20 years between them; **Jacaranda Season** (1983) and **Hanamu Dusk**. (2003)

**Dairy Gate**



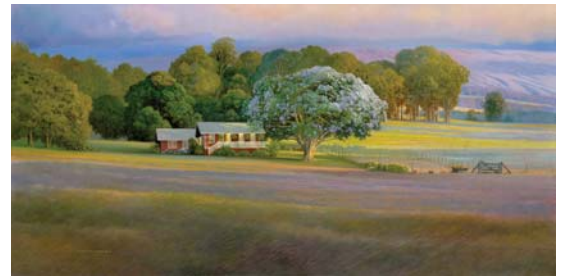
**Bridle Path**



**Jacaranda Season**



**Hanamu Dusk**



Continue on to .7 of a mile. You'll come to the site of two more paintings; **Dairy Gate** and **Bridle Path**.

Just up ahead, turn right on Kealaloa and stop on the right at .8 ml. This is another pair; **Hale Paniolo** and **After Hours...** (look east between the eucalyptus trees)

[Go to page 2](#)

**Hale Paniolo**



**After Hours**

